



Bluetooth Keyboard for iPad



1.0 Product Features :

1. Built-in wireless Bluetooth 3.0 keyboard.
2. Modern style designed for iPad.
3. iPad display stand for easy viewing.
4. Built-in Rechargeable lithium battery lasts for approximately 55 hours per charge.
5. Special **【home】** screen key for one touch access to variety of application.
6. Light weight ,quiet keystrokes,water-proof and dust-proof
7. Energy saving keyboard sleep mode.

Packing Contents :

1. wireless/wired keyboard
2. USB Power Charging cable
3. User Guide

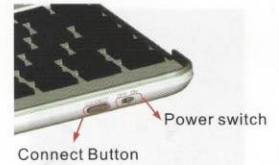
2. 0 Keyboard Specification :

1. Bluetooth 3.0 interface standard
2. Operating Distance to 10 meters.
3. Modulation System:GFSK
4. Operatin Voltage:3.0-5.0V
5. Working Current:<5.0mA
6. Standby Current:2.5mA
7. Sleeping Current: <200μA
8. Charging Current:≥100mA
9. Standby Time:60days
10. Charging Time:4-5hours
11. Lithium Battery Capacity:160mA
12. Uninterrupted Working Time:55hours
13. Lithium Battery Life:3 years
14. Lithium Battery Specifications: 45*16*5mm
15. Key Strength:80±10g
16. Key Life:5 million strokes
17. Operating Temperature:-10 -+55℃

3. 0Bluetooth Keyboard Pairing

step 1 : Turn on the power toggle switch. The [power]and[Bluetooth]indicator light will be 5 seconds,then the light will go off.

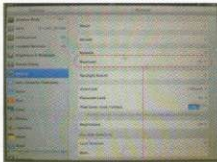
step 2 : Press on the [connect]button. The [Bluetooth]indicator light will be blinking,and the[power]indicator will be on. The keyboard is now ready to be connected to iPad



Step 3 : turn on and unlock iPad. Click on the iPad [setting] icon

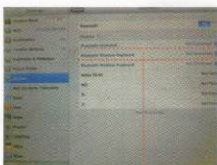


Step 4 : On the settings menu,select item[General] to access [Bluetooth]settings. Click on[Bluetooth] to turn on the connection.iPad will automatically search for a Bluetooth-enabled device.



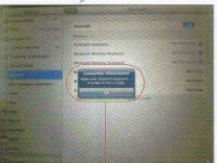
Click to turn on Bluetooth setting

Step 5 : Wireless keyboard found. Click on the device to connect.



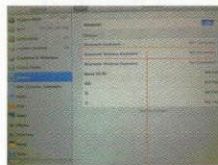
Click on the keyboard to connect

Step 6 : Enter the password code as displayed on screen.



Enter password code using the wireless keyboard

Step 7 : Wireless keyboard connected successfully.[power]indicator light will stay on until the keyboard is swithed off.



Keyboard connected successfully

Special Note:

The wireless keyboard can be connected to iphone 3G,3GS,4G and ipod Touch that had installed iOS 4.0 or later. For other Bluetooth enabled device,please verify the Bluetooth standard &compatibility before attempting to connect to the keyboard.

4.0 Charging

When the battery power is low,the[power] indicator light will start blinking,it is time to recharge the keyboard.

Step 1 : Connect USB-B of the native USB power cable to the keyboard charging interface

Step 2 : Connect USB-A to the power adaptor or computer's USB interface

Step 3 : The[charge]red indicator light will stay on when the keyboard is charging. Once it finished charging the [charge]indicator light will turn off.

5.0 Energy Saving Sleep mode

The keyboard will kick into sleep mode when it is inactive for 15 minutes,and the keyboard [power]indicator or light will go off. To activate from sleep mode,just press any key and wait 3 seconds,the keyboard will come back on.

6.0 Safety Caution

1. keep the item away from sharp objects.
2. Do not place heavy object on top of the keyboard.
3. Do not Microwave the item.
4. Do not force or distorted the keyboard.
5. Keep away from oil,chemical or any other organic liquid.

7.0 Cleaning

Clean the silicone keyboard with water,alcohol or cohol based disinfectant.

8.0 Troubleshooting

(A) Unable to connect

1. Make sure the power switch is on.
2. Make sure the keyboard is within the operating distance.
3. Make sure the battery is charged.
4. Make sure iPad Bluetooth setting is on
5. Make sure wireless keyboard is connected to iPad
6. Make sure wireless keyboard has been paired with the iPad

(B) Unable to charge keyboard

1. Make sure the USB power cable is connected properly to the keyboard and the power source.
2. Make sure the wall charger is plug into the power outlet.

9.0 Special keys description

Long press Fn and combination with F1-F12 and insert keys to the shift multimedia keys, and mainly be used in the operation of iPad multimedia

Federal Communication commission Interference Statement

This equipment has been tested and found to comply with the limits for a Class B digital device

Pursuant to Part 15 of the FCC rules, these limits are designed to provide reasonable protection against harmful interference in a residential installation. This equipment generates ususage and can radiate radio frequency energy and, if not installed and used in accordance with the instructions, may cause harmful interference to radio or television reception, which can be determined by turning the equipment off and on.

This device complies with Part 15 of the FCC Rules Operation is subject to the following two conditions : (1) this device may not cause harmful interference,and(2) this device must accept any interference received, including interference that may cause undesired operation.

FCC Caution Any change or modifications not expressly approved by the party responsible for compliance could void the user's authority to operate this equipment.

IMPORTANT NOTE

FCC Radiation Exposure Statement:

1. This equipment complies with FCC radiation exposure limits set forth for an uncontrolled environment. End users must follow the specific operating instructions for satisfying RF exposure compliance.
2. This transmitter must not be co-located or operating in conjunction with any other antenna or transmitter

iPad,iPhone,iPod Touch are trademarks of Apple Inc.